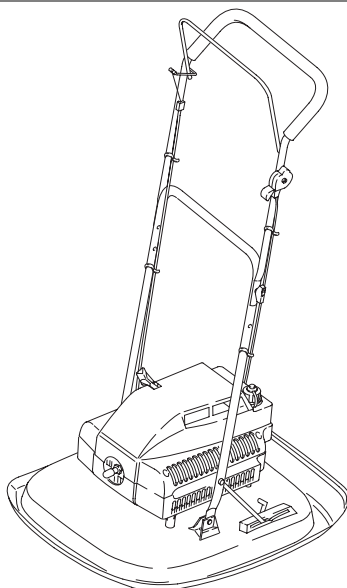


Flymo

L470



GB

IMPORTANT INFORMATION

Read before use and retain for future reference

D

WICHTIGE INFORMATION

Bitte vor dem Benutzen des Gerätes durchlesen und gut aufbewahren

F

RENSEIGNEMENTS IMPORTANTS

A lire avant usage et à conserver pour référence ultérieure

NL

BELANGRIJKE INFORMATIE

Leest u deze informatie voor het gebruik en bewaar ze voor toekomstige raadpleging

N

VIKTIG INFORMASJON

Les bruksanvisningen før bruk og oppbevar denne for senere bruk.

SF

TÄRKEÄÄ TIETOA

Lue tämä ennen käyttöä ja säilytä myöhempää tarvetta varten

S

VIKTIG INFORMATION

Läs anvisningarna före användningen och spara dem för framtida behov

DK

VIGTIGE OPLYSNINGER

De bør læse dette før brug og gemme til senere henvisning

E

INFORMACIÓN IMPORTANTE

Léase antes de utilizar y consérvela como referencia en el futuro

P

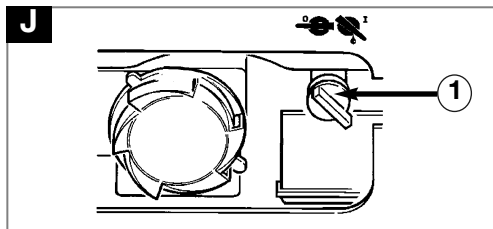
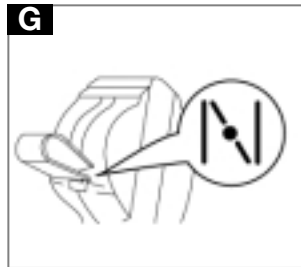
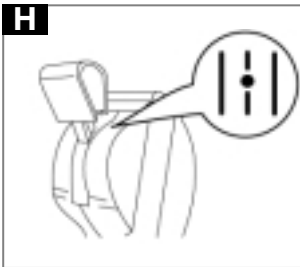
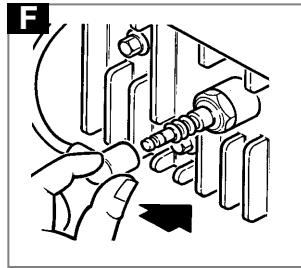
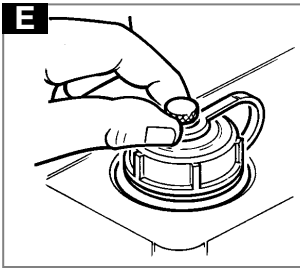
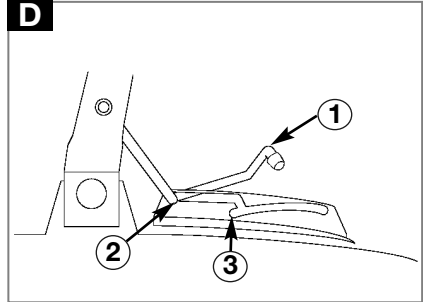
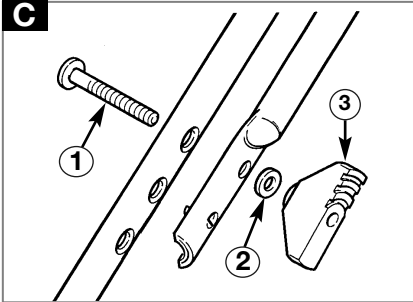
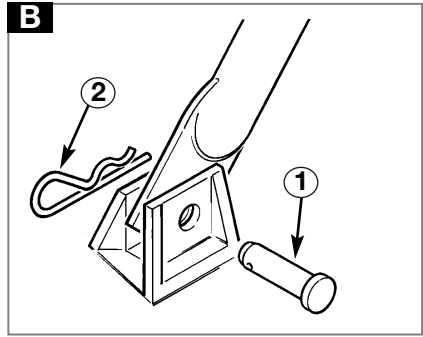
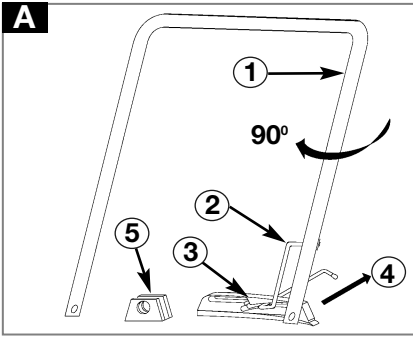
INFORMAÇÕES IMPORTANTES

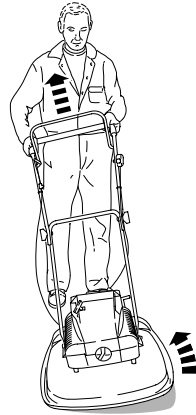
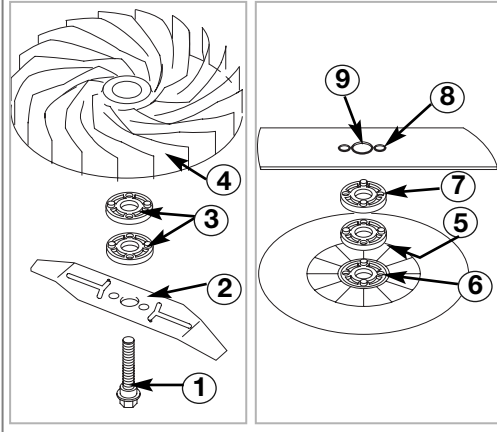
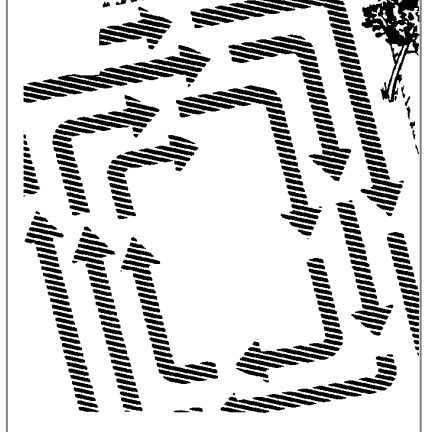
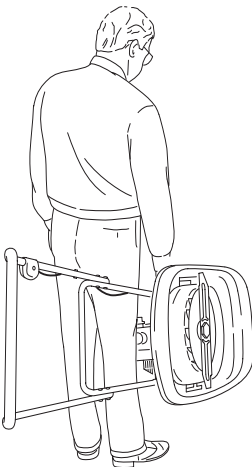
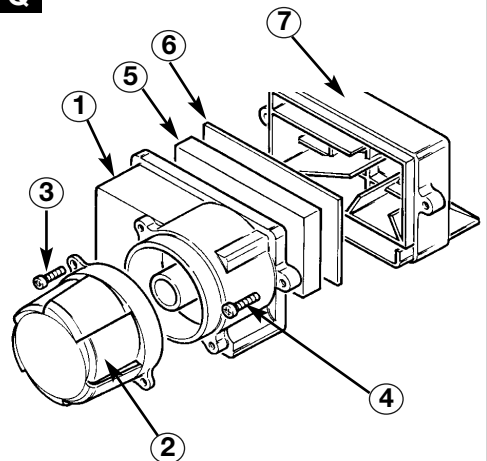
Leia antes de utilizar e guarde para consulta futura

I

INFORMAZIONI IMPORTANTI

Leggere prima dell'uso e conservare per consultazione futura



K**L****M****N****P****Q**

GB - CONTENTS

1. Operator Presence Control
2. Choke Control Lever
3. Upper Handle
4. Cable Clip x 4
5. Handle Knob x 2
6. Washer x 2
7. Bolt x 2
8. Lower Handle
9. Hook Assembly
10. Fuel Tank Cap
11. Starting Handle
12. Retaining Clip x2
13. Pin x2
14. Rating Label
15. Warning Label
16. Spark Plug Lead
17. Instruction Booklet
18. Guarantee Card

D - INHALT

1. Bedienerpräsenz-Kontrollvorrichtung
2. Chokeschalthebel
3. Oberer Griff
4. Kabelhalter x 4
5. Griffknopf x 2
6. Unterlegscheibe x 2
7. Bolzen x 2
8. Unterer Griff
9. Hakeneinheit
10. Tankkappe
11. Starterseil
12. Stifte x 2
13. Sicherungsscheiben x 2
14. Produkttypenschild
15. Warnetikett
16. Zündkerzenzuleitung
17. Bedienungsanleitung
18. Garantiekarte

F - TABLE DES MATIÈRES

1. Arceau de sécurité (CPO) (Contrôle de Présence de l'Opérateur)
2. Manette de starter
3. Poignée supérieure
4. Attache câble x 4
5. Bouton de Guidon x 2
6. Rondelle x 2
7. Boulons x 2
8. Guidon inférieur
9. Montage du crochet
10. Bouchon du réservoir d' essence
11. Poignée de démarrage
12. Axes x 2
13. Goupilles de fixation x 2
14. Plaque d'identification
15. Etiquette d'avertissement
16. Fil de bougie
17. Manuel d'instructions
18. Carte de garantie

NL - INHOUD

1. Operator Presence Control (OPC of Veiligheids hendel)
2. Regelhendel choke
3. Bovenste duwboom
4. Snorklem x 4
5. Knop voor duwboom x 2
6. Ring x 2
7. Bout x 2
8. Onderstuk van duwboom
9. Haak
10. Dop voor benzinetank
11. Starthendel
12. Borgveren x 2
13. Pennen x 2
14. Productlabel
15. Waarschuwingsetiket
16. Bougiekabel
17. Handboek
18. Garantiekaart

N - INNHOLD I ESKEN

1. Start/Stop bryter
2. Chokens kontrollspak
3. Øvre håndtak
4. Kabelklemme (4 stk)
5. Vingemutter (2 stk)
6. Skiver (2 stk)
7. Bolt (2 stk)
8. Nedre håndtak (2stk)
9. Krokmontering (Hakemontering)
10. Bensintankklokk
11. Starthåndtak/snor
12. Bolt (2 stk.)
13. Låseklips (2 stk.)
14. Typeetiketten
15. Advarselsetikett
16. Ledning/hette for tennplugg
17. Bruksanvisning
18. Garantikort

SF - SISÄLTÖ

1. Käynnistys/pysäytys-katkaisin
2. Ryyppytyksen säätövipu
3. Ylävärsi
4. Johdon pidike x 4
5. Kahvan nappi x 2
6. Pultin välirengas x 2
7. Pultti x 2
8. Alempi kahva
9. Koukku
10. Polttoainesäiliön korkki
11. Käynnistyskahva
12. Tapit x 2
13. Sokka x 2
14. Tuotteen arvokilpi
15. Varoitusnimike
16. Syytystulpan johdin
17. Käyttöohjeet
18. Takuukortti

S - INNEHÅLL

1. Motorbromsbygel
2. Kontrollspak för choke
3. Övre handtag
4. Kabelkålma x 4
5. Knopp för handtag x 2
6. Bricka x 2
7. Bult x 2
8. Nedre handtag
9. Hakenhet
10. Tanklock
11. Starthandtag
12. Låskålma x 2
13. Sprint x 2
14. Identifieringsetikett
15. Varningsetikett
16. Tåndkabel
17. Instruktionsbok
18. Garantikort

DK - INDHOLD

1. Start/stopkontakt
2. Chokerbetjeningsgreb
3. Øvre håndtag
4. Kabelklemme x 4
5. Håndtagsknop
6. Spændskive x 2
7. Bolt x 2
8. Nedre håndtag
9. Krogsamling
10. Benzindæksel
11. Starthåndtag
12. Monteringsclipsene x 2
13. Tappene x 2
14. Produktmærkat
15. Advarselsmærkat
16. Tændrørsledning
17. Brugsvejledning
18. Garantibevis

E - CONTENIDO

1. Interruptor de contacto
2. Palanca de control del estrangulador
3. Manillar superior
4. Grapa de cable x 4
5. Manija de empuñadura x 2
6. Arandela x 2
7. Perno x 2
8. Empuñadura inferior
9. Montaje del engancho
10. Tapa del tanque de combustibles
11. Manilla de arranque
12. Pasadores x 2
13. Grapas de sujeción x 2
14. Etiqueta indicadora del producto
15. Etiqueta de Advertencia
16. Cable de la bujía
17. Manual de Instrucciones
18. Tarjeta de garantía

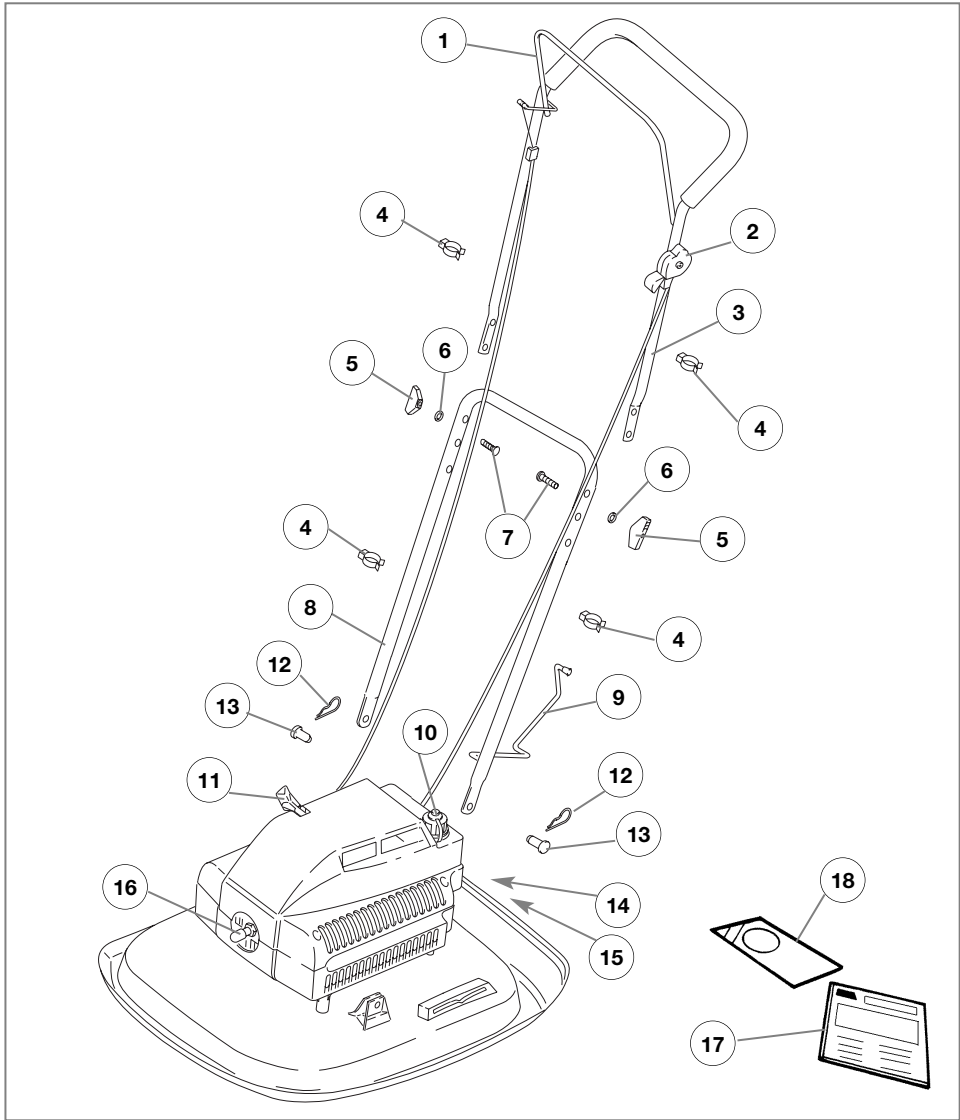
P - LEGENDA

1. Interruttore de Ligar/Desligar
2. Alavanca de Controlo da Válvula de Borboleta
3. Cabo Superior x 4
4. Grampo do cabo
5. Maçaneta x 2
6. Arruela x 2
7. Cavilha x 2
8. Guiador inferior
9. Conjunto do Gancho
10. Tampo do Depósito de Combustível
11. Pega de Arranque
12. Pernos x 2
13. Clips de fixação x 2
14. Etiqueta de Especificações do Produto
15. Etiqueta de Aviso
16. Fio da vela de ignição
17. Manual de Instruções
18. Cartão de garantia

I - NOMENCLATURA

1. Leva comando/controllo
2. Leva di comando starter
3. Manico superiore
4. Morsetto per il cavo x 4
5. Manopola dell'impugnatura x 2
6. Rondella x 2
7. Bullone x 2
8. Impugnatura inferiore
9. Gruppo gancio
10. Tappo serbatoio carburante
11. Maniglia di avviamento
12. Spinotti x 2
13. Bloccaggio x 2
14. Etichetta con dati prodotto
15. Etichetta di pericolo
16. Conduttore candela
17. Manuale d'istruzioni
18. Tagliando di garanzia

(GB)	CARTON CONTENTS	(N)	KARTONGENS INNHold	(E)	CONTENIDO DEL CARTON
(D)	KARTONINHALT	(SF)	PAKETIN SISÄLTÖ	(P)	LEGENDAS DOS DESENHOS
(F)	CONTENU DU CARTON	(S)	FÖRPACKNINGENS INNEHÅLL	(I)	DE CARTONE
(NL)	INHOUD	(DK)	KARTONINDHOLD		



SAFETY PRECAUTIONS



If not used properly this lawnmower can be dangerous! This lawnmower can cause serious injury to the operator and others, the warnings and safety instructions must be followed to ensure reasonable safety and efficiency in using this lawnmower. The operator is responsible for following the warning and safety instructions in this manual and on the lawnmower.

Explanation of Symbols on the L470



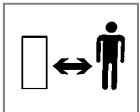
Warning



Read the user instructions carefully to make sure you understand all the controls and what they do.



Always keep the lawnmower on the ground when mowing. Tilting or lifting the lawnmower may cause stones to be thrown out



Keep bystanders away. Do not mow whilst people especially children or pets are in the mowing area



Beware of severing toes or hands. Do not put hands or feet near a rotating blade.



Disconnect the spark plug before attempting any maintenance, cleaning or adjustment, or if you are going to leave the lawnmower unattended for any period.



Blade continues to rotate after the machine is switched off. Wait until all machine components have completely stopped before touching them.

General

1. Never allow children or people unfamiliar with these instructions to use the mower. Local regulations may restrict the age of the operator.
2. Only use the lawnmower in the manner and for the functions described in these instructions.
3. Never operate the lawnmower when you are tired, ill or under the influence of alcohol, drugs or medicine.
4. The operator or user is responsible for accidents or hazards occurring to other people or their property.

Fuel Safety

WARNING - Petrol is highly flammable

- Wear protective clothing when handling any fuels and lubricants.
- Avoid contact with skin. If affected, wash liberally with soap and water.

- Remove petrol and engine oil before transporting the product.
- Store fuel in a cool place in a container specifically designed for the purpose.
- Only use a container that is specially designed for mixing fuel.
- Your lawnmower has a 2 stroke engine which runs on fuel of 1 part of oil to 25 parts of petrol.
- Do not use standard 2-stroke mixture as supplied by garages, neat petrol or multi grade oil.
- Use a good quality 2-stroke oil or a quality SAE 30 oil mixed with fresh REGULAR grade unleaded petrol.
- Refuel outdoors only and do not smoke while refuelling.
- Wipe dirt and grass clippings from the fuel tank filler cap to avoid getting dirt into the fuel tank.
- Add fuel **BEFORE** starting the engine. Never remove the cap of the fuel tank or add fuel while the engine is running or when the engine is hot.
- If petrol is spilled, do not attempt to start the engine but move the machine away from the area of spillage and avoid creating any source of ignition until petrol vapours have dissipated.
- Never use stale fuel left from last season or fuel which has been stored for long periods.
- Replace all fuel tanks and container caps securely.
- Move the product away from the fuelling area before starting
- Fuel should be stored in a cool place away from naked flames.
- Your carburettor is pre-set. Normally no further adjustment is required.



Preparation

1. Do not mow barefoot or in open sandals. Always wear suitable clothing, gloves, and stout shoes.
2. The use of ear protection is recommended.
3. Make sure the area to be cut is clear of sticks, stones, bones, wire and debris; they could be thrown by the blade.
4. Before using always visually inspect to see that cutting lines, disc bolts and disc assembly are not worn or damaged. Replace worn or damaged blades together with their fixings in sets to preserve balance.
5. Have faulty silencers replaced.

Use

1. Do not operate the engine in a confined space where exhaust fumes (carbon monoxide) can collect.
2. Use the mower only in daylight or good artificial light.
3. Avoid operating your mower in wet grass, where feasible.
4. Take care in wet grass, you may lose your footing.
5. On slopes, be extra careful of your footing and wear non-slip footwear.
6. Mow across the face of slopes, never up and down.
7. Exercise extreme caution when changing direction on slopes.

SAFETY PRECAUTIONS

- Mowing on banks and slopes can be dangerous. Do not mow on **banks** or **steep** slopes.
- Do not walk backwards when mowing, you could trip. Walk never run.
- Never cut grass by pulling the mower towards you.
- Release the Operator Presence control to stop the engine before pushing the mower across surfaces other than grass and when transporting the lawnmower to and from the area to be mowed.
- Never operate the lawnmower with damaged guards or without guards in place.
- Do not overspeed the engine or alter governor settings. Excessive speed is dangerous and shortens lawnmower life.
- Always start the lawnmower carefully with feet well away from the blades.
- Do not tilt the mower when starting the engine, except if the mower has to be tilted for starting. In this case, do not tilt more than absolutely necessary and lift only the part which is away from the operator. Always ensure that both hands are in the operating position before returning the appliance to the ground.
- Never pick up or carry a lawnmower while the engine is running
- Spark plug lead may be hot - handle with care.
- Do not attempt any maintenance on your lawnmower when the engine is hot.
- Release the Operator Presence Control, to stop the engine, and wait until the blade has stopped:
 - before leaving the mower unattended for any period.
- Release the Operator Presence Control, to stop the engine, wait until the blade has stopped, disconnect the spark plug lead and wait until the engine has cooled:-
 - before refuelling
 - before clearing a blockage;
 - before checking, cleaning or working on the appliance;
 - if you hit an object. Do not use your lawnmower until you are sure that the entire lawnmower is in a safe operating condition;
 - if the lawnmower starts to vibrate abnormally. Check immediately. Excessive vibration can cause injury.



Maintenance and storage

- Keep all nuts, bolts and screws tight to be sure the lawnmower is in safe working condition.
- Replace worn or damaged parts for safety.
- Only use the replacement blade, blade bolt, spacer and impeller specified for this product.
- Never store the lawnmower with fuel in the tank inside a building where fumes can reach an open flame or spark.
- Allow the engine to cool before storing in any enclosure.
- To reduce fire hazard, keep the engine, muffler and fuel storage area free of grass, leaves or excessive grease.
- If the fuel tank has to be drained, this should be done outdoors.
- Be careful during adjustment of the machine to prevent entrapment of the fingers between moving parts and fixed parts of the machine.

Fuel Mixing Instructions

- Ensure mixing bottle and cap are clean and standing on a level surface.
- Add fresh regular grade unleaded petrol up to the 1 litre mark on the bottle.
- Add a good quality 2 stroke oil, to the 25 : 1 mark (40 ml of oil) on the bottle.
- Screw cap on, shake container until petrol and oil are thoroughly mixed.
- Clean fuel tank filler cap and fill fuel tank.
 - UK ONLY:-** Electrolux Outdoor Products manufacture a specially designed fuel mixing bottle. For further information contact your local Electrolux Outdoor Products Service Centre/Stockist or contact the Electrolux Outdoor Products Customer Helpline on 01325 300303

Assembly and Adjustment

Fitting the Lower Handle to the Lawnmower

- Feed the hook **(A2)** attached to the lower handle **(A1)** halfway through the centre slot of the guide **(A3)**, in the direction indicated by the arrow **(A4)**.
- Maintaining the hook **(A2)** in the centre slot of the guide **(A3)** turn the lower handle **(A1)** clockwise through 90° to place both legs of the lower handle in position between the hood brackets **(A5)**.
- Insert the pins **(B1)** and secure with the retaining clips **(B2)**.

Fitting the Upper Handle to the Lower Handle

BEFORE fitting the upper handle to the lower handle, stabilize the lower handle by lifting the hook **(D1)** to the 'parking' position **(D2)**.

- Ensure the Choke Control Lever is on the right hand side when viewed from the rear.

- Align the lower and upper handle **(See fig C)**. Locate the bolts **(C1)**, washers **(C2)** and secure with the handle knobs **(C3)**.
- Fit the cables to the handles with the cable ties provided, making sure the cables are not trapped between the upper and lower handles.

Handle Position

The handle position can be adjusted using the guide and hook assembly.

- Lift hook **(D1)**.
- Position as required:
 - (D2)** Parking position
 - (D3)** Mowing position

Starting and Stopping

To Start your Lawnmower

1. Move the handle to the parking position **(D2)**. Open the fuel tank air vent screw **(E)**.
2. Open the fuel tap **(J1)**. Connect the spark plug lead. **(F)**.
3. Set the choke control lever to 'cold start' **(G)** when the engine is cold or 'normal' **(H)** when the engine is hot.
4. Pull and firmly hold the Operator Presence Control to the upper handle.
5. With your left foot on the hood, tilt the lawnmower towards you. **(K)**. This prevents a ring being cut in your lawn.
6. Pull the starting handle gently until you feel a resistance, return the starting handle slowly.
7. Pull the starting handle firmly towards you to its full extent.

8. Allow the engine to reach its full running speed then gently lower the lawnmower to the ground.
9. When the engine has warmed up make sure the choke control lever is in the 'normal' **(H)** position.

To Stop your Lawnmower

- **Blade continues to rotate after the machine has switched off, rotating blades can cause injury.**
1. Release the Operator Presence Control.
 2. As the engine dies, tilt the lawnmower slightly. **(L)** This prevents a ring being cut in your lawn.
 3. Put the handle in the Parking position **(D2)**.
 4. When the engine has stopped, lower the lawnmower to the ground.
 5. Close the fuel tap **(J1)** and the fuel tank air vent screw.

Adjusting the cutting height

Adjusting the Cutting Height

- **Never use more than 2 cutting height spacers.**
 - **Spacers can only be fitted between the blade and the fan and never between blade and the bolt (M).**
1. Ensure the Operator Presence Control is released, when the engine has stopped rotating - disconnect the spark plug lead.
 2. Close the fuel tank air vent screw and fully close the fuel tap **(J1)**. Turn your lawnmower on its side.
 3. Remove the blade bolt **(M1)** and blade **(M2)** as described in **Removing the Blade and Fan** below.

4. **For a Lower Cut - Add spacers (M3) to a maximum of 2.**
5. **For a Higher Cut - Take spacers (M3) away.**
6. Refit the blade as described in **Fitting the Blade and fan** below.

How to Mow

1. Place the handle in the mowing position **(D3)**. Start from the edge, mow in a clockwise direction **(N)**.
2. Mow twice a week in the growing season. Your lawn will suffer if more than one third of its length is cut at one time.

Removing & Fitting the Blade & Fan

WARNING

- **Always handle the blade with care - sharp edges could cause injury.**
- **Spark plug lead may be hot - handle with care.**

Removing the Blade and Fan

- **Renew your metal blade after 50 hours mowing or 2 years whichever is the sooner - regardless of condition.**
 - **If the blade is cracked or damaged replace it with a new one.**
1. Ensure the Operator Presence Control is released, when the engine has stopped and the blade has stopped rotating - disconnect the spark plug lead.
 2. Close the fuel tank air vent screw and fully close the fuel tap **(J1)**. Turn your lawnmower on its side.
 3. To remove the blade bolt **(M1)**, hold the fan **(M4)** firmly and with the spanner provided loosen the blade bolt by turning it anti-clockwise.
 4. Remove the blade bolt **(M1)**, blade **(M2)**, spacers **(M3)** and fan **(M4)**.
 5. Inspect for damage and clean as necessary.

Fitting the Blade and the Fan

- **Before using always visually inspect to see that blades and bolts are not worn or damaged.**
 - **Never use more than 2 cutting height spacers.**
 - **Spacers can only be fitted between the blade and the fan and never between blade and the bolt.**
1. Ensure the fan is located correctly.
 2. Place the spacers **(M3)** onto the fan ensuring the pegs **(M5)** have located into the holes **(M6)**.
 3. Place the blade **(M2)** onto the spacers **(M3)** ensuring the pegs **(M7)** have located into the holes **(M8)** on the blade and ensuring the blade is positioned as illustrated in **Figure M**.
 4. Place the blade bolt **(M1)** through the centre hole **(M9)** of the blade.
 5. Tighten down clockwise by hand.
 6. Hold the fan firmly and tighten the blade bolt with the spanner provided.

Caring for your Lawnmower

If you do not intend to use your lawnmower for long periods it is advisable to follow this procedure after use:

1. Stop the engine.
2. Close the fuel tank air vent screw and fully close the fuel tap. **(J1)**
3. Restart the engine.
4. As fuel runs out the engine will begin to stop, tilt the lawnmower. **(L)**
5. Once the engine has stopped, release the Operator Presence Control.
6. Disconnect the spark plug lead.
7. Remove all fuel from the fuel tank.

Cleaning

- **Keep your lawnmower clean - grass clippings left in any of the air intakes, around the engine or under the deck could become a potential fire hazard.**

- **Do not clean with chemicals, including petrol, or solvents - some can destroy critical plastic parts.**

1. Remove grass from under the deck with a piece of wood or similar.
2. Using a soft brush - remove grass clippings from around the engine and from all air intakes.
3. Remove the fan, **See 'Removing and Fitting the Blade and Fan'**, and clean with a soft brush.
4. Wipe over the surface of your lawnmower with a dry cloth.

Carrying your Lawnmower

- **Never carry a lawnmower when it is running**

Carry the lawnmower at the point of balance with the blade facing away from you and the air cleaner facing upwards. **(P)**

Storing Your Lawnmower

Store in a cool, dry, damp-proof and safe place. Service your lawnmower after the last cut of the year as follows:-

At the end of the Mowing Season

1. Stop the engine.
2. Close the fuel tank air vent screw and fully close the fuel tap. **(J1)**
3. Restart the engine.
4. As fuel runs out the engine will begin to stop, tilt the lawnmower. **(L)**
5. Once the engine has stopped, release the Operator Presence Control.
6. **Disconnect the spark plug lead.**
7. Remove all fuel from the fuel tank.
8. Remove the spark plug lead and spark plug. Pour one teaspoon (5ml) of oil through the spark plug hole. Pull the starting handle 2 or 3 times. This will distribute oil on the internal surfaces of the engine. Inspect, clean and replace the spark plug. If a new spark plug is required contact your local approved Electrolux Outdoor Products Service Centre/Dealer. **Do not re-connect the spark plug lead.**
9. Clean the air filter. See '**Cleaning the Air Filter**'.
10. Renew the blade if it is cracked, damaged or bent. Renew the blade bolt if necessary. **See 'Removing and Fitting the Blade and Fan' for complete instructions.**
11. Use only genuine Flymo parts and accessories specified for this product.
12. Clean your lawnmower thoroughly **See 'Cleaning'**.
13. Your local approved **Electrolux Outdoor Products Service Centre/Dealer** will carry out any service or repairs required.
14. Store your lawnmower in a cool, dry, damp-proof and safe place.

Maintenance - Cleaning the Air Filter

WARNING

Do not oil the filters

1. Follow the procedure described in '**Caring for your Lawnmower**'
- **DO NOT REMOVE the cap (Q2) or screws (Q3) unless there is visual evidence of grass or dirt.**
2. Remove the two screws **(Q4)**. Take off the filter cover. **(Q1)**
3. Remove the two filters **(Q5)** and **(Q6)**. Clean inside the filter cover **(Q1)** thoroughly.
4. Shake or tap the thick filter **(Q5)** to remove any dirt or dust.

5. Replace the thin filter **(Q6)** if it is contaminated with dust. New filters are available from your local **Electrolux Outdoor Products Service Centre/Dealer**.
6. Install the thick filter **(Q5)** in the filter cover **(Q1)**. Place the thin filter **(Q6)** on top. **DO NOT CREASE THE FILTERS.**
7. Clean the filter body **(Q7)** with a small brush. Replace the filter cover **(Q1)** and the two screws **(Q4)**.

Fault Finding

Engine Will Not Start

1. Ensure that the Operator Presence Control is gripped firmly to the upper handle.
2. Check that there is sufficient fuel of the correct mix in the fuel tank, the fuel tap is open and the fuel tank air vent screw is open.
3. Check that the choke control lever is in the correct position:- 'normal' **(H)** - for a hot engine, 'cold start' **(G)** - for a cold engine.
4. The engine may have flooded. Remove and dry the spark plug.
5. Petrol may be stale, replace. Once the petrol has been replaced, it may take a little time for fresh petrol to filter through.
6. Check that the blade bolt is tight. A loose blade bolt could cause difficult starting.
7. **If the engine will still not start - disconnect the spark plug lead and consult your local approved Electrolux Outdoor Products Service Centre/Dealer.**

Poor Flotation or Lack of Power

1. Disconnect the spark plug lead.
2. Clean the underside of the hood, the air filter, the fan, around the engine and the air intakes.
3. Check that the engine choke control lever is in the 'normal' position. **(H)**
4. Petrol may be stale, replace. Once the petrol has been replaced, it may take a little time for fresh petrol to filter through.
5. **If poor flotation or lack of power persists - disconnect the spark plug lead and consult your local approved Electrolux Outdoor Products Service Centre/Dealer.**

Excessive Vibration

1. Disconnect the spark plug lead.
2. Check that the blade is correctly fitted. **'See 'Fitting and Removing the Blade and the Fan'.**
3. If the blade is damaged or worn, renew the blade.
4. **If vibration persists - do not use - disconnect the spark plug lead and consult your local approved Electrolux Outdoor Products Service Centre/Dealer.**

Service Recommendations

- **Your product is uniquely identified by a silver and black product rating label.**
- **We strongly recommend that your product is serviced at least every twelve months, more often in a professional application.**

Guarantee and Guarantee Policy

If any part is found to be defective due to faulty manufacture within two years of original purchase, Electrolux Outdoor Products, through its Authorised Service Repairers will effect the repair or replacement to the customer free of charge providing:

- (a) The fault is reported directly to the Authorised Repairer.
 - (b) Proof of purchase is provided.
 - (c) The fault is not caused by misuse, neglect or faulty adjustment by the user.
 - (d) The failure has not occurred through fair wear and tear.
 - (e) The machine has not been serviced or repaired, taken apart or tampered with by any person not authorised by Electrolux Outdoor Products.
 - (f) The machine has not been used for hire.
 - (g) The machine is owned by the original purchaser.
 - (h) The machine has not been used outside of the country for which it was specified.
 - (i) The machine has not been used commercially.
- * This guarantee is additional to, and in no way diminishes the customers statutory rights.

Failures due to the following are not covered, therefore it is important that you read the instructions contained in this Operator's Manual and understand how to operate and maintain your machine:

Failures not covered by guarantee

- * Replacing worn or damaged blades
- * Failures as a result of not reporting an initial fault.
- * Failures as a result of sudden impact.
- * Failures as a result of not using the product in accordance with the instructions and recommendations contained in this Operator's Manual.
- * Machines used for hire are not covered by this guarantee.
- * The following items listed are considered as wearing parts and their life is dependent on regular maintenance and are, therefore not normally subject to a valid warranty claim: Blades, belts, cables, recoil ropes, filters.
- * **Caution!**
Electrolux Outdoor Products does not accept liability under the warranty for defects caused in whole or part, directly or indirectly by the fitting of replacement parts or additional parts that are not either manufactured or approved by Electrolux Outdoor Products, or by the machine having been modified in any way.

Environmental Information

Electrolux Outdoor Products are manufactured under an Environmental Management System (ISO 14001) using, where practical, components manufactured in the most environmentally responsible manner, according to company procedures, and with the potential for recycling at the end of the products' life.

- Packaging is recyclable and plastic components have been labelled (where practical) for categorised recycling.
- Awareness of the environment must be considered when disposing of 'end-of-life' product.
- If necessary, contact your local authority for disposal information.

DISPOSAL OF FUELS AND LUBRICATING OILS

- Wear protective clothing when handling any fuels and lubricants.
- Avoid contact with skin.
- Remove petrol and engine oil before transporting the product.
- Contact your local authority for information of your nearest Recycling/Disposal Station.
- **Do NOT dispose of used fuels/oils with household waste**
- **Do NOT dispose of used fuels/oils to water.**
- **Waste fuels/oils are harmful, but can be recycled and should be disposed of through the recognised facilities.**
- **Do NOT incinerate**

BELGIQUE/BELGIË	Flymo Belgique/België Tel: 02 363 0311, Fax: 02 363 0391
ČESKÁ REPUBLIKA	Electrolux, spol. s.r.o., oz Electrolux Outdoor Products, Dobronická 635, 148 25 Praha 4 Tel: 02/6111 2408-9, Info-linka: 0800/110 220 Internet: www.partner-flymo.cz E-mail: info@husqvarna.cz
DANMARK	Electrolux Outdoor Products, Flymo/Partner A/S, Lundtoftegårdsvej 93A, DK 2800 Kgs.Lyngby Tel: 45 877577, www.flymo-partner.dk
DEUTSCHLAND	Flymo Deutschland Tel: 097 21 7640, Fax:097 21 764202
ESPAÑA	Electrolux Zanussi Industrial SA., division Flymo Iberica Tel: 34 1 883 0429, Fax: 34 1 882 7841
ESTONIA	Electrolux Estonia Ltd (Electrolux Eesti AS) Tel: (372) 6650010
FRANCE	Flymo France SNC Tel 01 46 67 8141, Fax 01 43 34 2491
FINLAND SUOMI	Flymo Finland Suomi Tel: 00 39611, Fax: 00 39 612632
ITALIA	McCulloch Italiana s.r.l. - Via Como 72, 23868 Valmadrera (LECCO) - ITALIA, Tel: 800 017829, Fax: 0341 581671
IRELAND	Flymo Ireland Tel: 01 4565222, Fax: 01 4568551
MAGYARORSZÁG	Electrolux Lehel Kft Tel: 00 36 1 251 41 47
NORGE	Flymo/Partner, div. av Electrolux Motor a.s. Tel: 69 10 47 90
NEDERLAND	Flymo Nederland Tel: 0172-468322, Fax: 0172-468219
ÖSTERREICH	HUSQVARNA Zentralwerkstätte, Industriezeile 36, 4020 LINZ, Tel: 0732 770101-60, Fax: 0732 795922
POLSKA	Electrolux Poland Sp. z.o.o. Husqvarna, 01-612 Warszawa Myslowicka 10/2 Tel:- (22) 8332949
PORTUGAL	Electrolux Zanussi Industrial SA., division Flymo Iberica Tel :- 34 1 883 0429, Fax :- 34 1 882 7841
SLOVENIJA	SKANTEH d.o.o. Tel:- (061) 133 70 68, Fax:-(061) 133 70 68
SLOVENSKA	Electrolux Slovakia s.r.o., Borova Sihot 211, 033 01 Lipt. Hradok Tel: 044 522 14 19, Fax: 044 522 14 18, www.flymo-partner.sk
SCHWEIZ/SUISSE/SUIZZERA	Flymo Schweiz/Suisse/Suizzera Tel 062 889 93 50 / 889 94 25, Fax 062 889 93 60 / 889 94 35
SVERIGE	Electrolux Outdoor Products, Sverige Tel: 036 – 14 67 00, Fax: 036 – 14 60 70
UNITED KINGDOM	Electrolux Outdoor Products United Kingdom Tel: 01325 300303, Fax: 01325 310339

Electrolux Outdoor Products
Aycliffe Industrial Park
NEWTON AYCLIFFE
Co.Durham DL5 6UP
ENGLAND

Telephone - (00) 44 1325 300303 Fax - (00) 44 1325 310339

UK Customer Helpline - 01325 300303 Fax - 01325 310339

Our policy of continuous improvement means that the specification of products may be altered from time to time without prior notice. Electrolux Outdoor Products manufacture products for a number of well known brands under various registered patents, designs and trademarks in several countries.

© Electrolux Outdoor Products Ltd. Registered Office, Electrolux Works, Oakley Road, Luton LU4 9QQ
Registered number 974979 England



From the Electrolux Group. The world's No.1 choice.

The Electrolux Group is the world's largest producer of powered appliances for kitchen, cleaning and outdoor use. More than 55 million Electrolux Group products (such as refrigerators, cookers, washing machines, vacuum cleaners, chain saws and lawn mowers) are sold each year to a value of approx. USD 14 billion in more than 150 countries around the world.

